

COIL OVER FITTING HARDWARE



HIGH QUALITY FITTING HARDWARE



Lower Spring Seats
Available in 57, 60, 63 & 65mm
Inner Diameters



Threaded Sleeve
FH1006
Internal Diameter 42.2mm / Length 75mm



**Threaded Universal Strut Tube with
Combined Threaded Gland Nut Adaptor**
FH1026
Length 365mm / Internal Diameter 47mm
Outer Diameter 57mm
Use KONI Gland Nut No: 7325-01-0071



Spring Seat Lock Rings
Available in 57, 60, 63 & 65mm
Inner Diameters



Threaded Sleeve
FH1020
Internal Diameter 60mm / Length 120mm



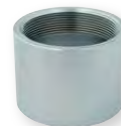
**Threaded Gland Nut Adaptor
to weld to Strut Tube**
FH8021
Length 75mm / Internal Diameter 49.6mm
Use KONI Gland Nut No: 7325-01-0071



Spring Separator Rings
Available in 57, 60, 63 & 65mm
Inner Diameters



Threaded Sleeve
FH1035
Internal Diameter 55mm / Length 120mm



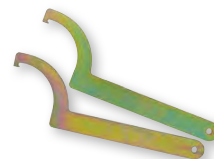
**Threaded Gland Nut Adaptor
to weld to Strut Tube**
FH8022
Length 44mm / Internal Diameter 54mm
Use KONI Gland Nut No: 7325-01-0071
(Commonly used to install a KONI double adjustable



Upper Spring Seat Flat
Available in 57, 60, 63 & 65mm
Inner Diameters



**Threaded Sleeve Combined
with Threaded Gland Nut Adaptor**
FH1036
Internal Diameter 54mm / Length 135mm
Use KONI Gland Nut No: 7325-01-0071



C-Spanners
FH0106



Upper Spring Seat Raised
Available in 57, 60, 63 & 65mm
Inner Diameters



**Threaded Sleeve Combined
with Threaded Gland Nut Adaptor**
FH1037
Internal Diameter 2" / Length 170mm
Use KONI Gland Nut No: 7325-01-0031



**We Stock a variety of
KONI Gland Nuts**

COIL OVER APPLICATION

DAMPER TYPE	SLEEVE I.D.	SPRING I.D.	SLEEVE LENGTH	SLEEVE	SPRING SEAT	LOCK RING
	"A"	"B"	"C"	Part Number		
KONI 80 SERIES	41 mm	53 mm	75 mm	FH1009	FH2005	FH3005
		63 mm	75 mm	FH1009	FH2012	FH3005
	43 mm	53 mm	75 mm	FH1005	FH2005	FH3005
		63 mm	75 mm	FH1005	FH2012	FH3005
KONI 8040 SERIES	42.2 mm	53 mm	75 mm	FH1006	FH2005	FH3005
		63 mm	75 mm	FH1006	FH2012	FH3005
STRUTS	45 mm	53 mm	75 mm	FH1010	FH2005	FH3005
		57 mm	75 mm	FH1010	FH2010	FH3005
		63 mm	75 mm	FH1010	FH2012	FH3005
		60 mm	90 mm	FH1014	FH2011	FH3011
STRUTS	48 mm	60 mm	120 mm	FH1015	FH2015	FH3015
		63 mm	120 mm	FH1015	FH2020	FH3015
		65 mm	120 mm	FH1015	FH2021	FH3015
KONI 30 & 82 SERIES	50 mm	60 mm	120 mm	FH1020	FH2015	FH3015
		63 mm	120 mm	FH1020	FH2020	FH3015
		65 mm	120 mm	FH1020	FH2021	FH3015
STRUTS	2 inch	63 mm	120 mm	FH1025	FH2025	FH3025
		63 mm	170 mm	FH1037*	FH2025	FH3025
		65 mm	120 mm	FH1025	FH2026	FH3025
		65 mm	170 mm	FH1037*	FH2026	FH3025
STRUTS	2.125 inch	63 mm	120 mm	FH1030	FH2030	FH3030
		63 mm	135 mm	FH1036*	FH2030	FH3030
		63 mm	180 mm	FH1038*	FH2030	FH3030
		65 mm	120 mm	FH1030	FH2031	FH3030
		65 mm	135 mm	FH1036*	FH2031	FH3030
		65 mm	180 mm	FH1038*	FH2031	FH3030
KONI 82 SERIES	55 mm	63 mm	120 mm	FH1035	FH2030	FH3030
		65 mm	120 mm	FH1035	FH2031	FH3030
STRUT TUBE	47 mm	63 mm	365 mm	FH1026*	FH2025	FH3025
		65 mm	365 mm	FH1026*	FH2026	FH3025

*NOTES: SLEEVE HAS INTERNAL THREAD FOR GLAND NUT TO LOCK ON

	SPRING I.D.	PART NUMBER	NOTES
TOP SPRING SEAT (STANDARD)	57 mm	FH4005	All top spring seats have a 10 mm centre hole. This hole can be enlarged as required to suit the shock absorber in use.
	60 mm	FH4010	
	63 mm	FH4015	
	65 mm	FH4020	
TOP SPRING SEAT (RAISED)	60 mm	FH4013	For extra clearance between top of the spring seat and the upper mount
	63 mm	FH4023	
TENDER SPRING SEPARATORS	57 mm	FH5005	These aluminium separators are utilised when installing a tender spring with a main spring
	60 mm	FH5010	
	63 mm	FH5015	
	65 mm	FH5020	
CONVERT SPACER		1529040030	Converting spacer from 57/63mm ID
C SPANNER		FH0106	Used to adjust spring seats and lock rings.

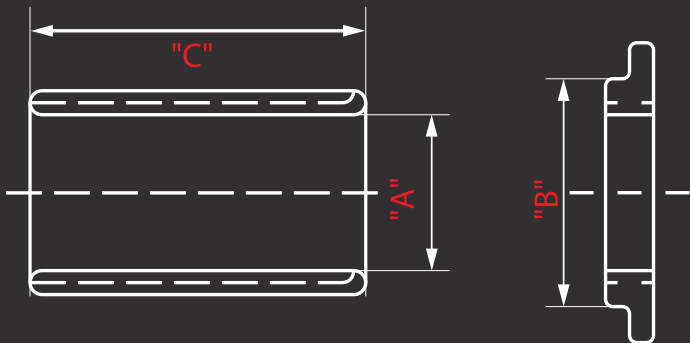
SLEEVE & SPRING SEAT DIMENSIONS

Please Note: See above chart for reference

DIMENSION "A"
Refers to Threaded Sleeve Inner Diameter

DIMENSION "B"
Refers to spring Inner Diameter

DIMENSION "C"
Refers to Threaded Sleeve Length



NUMERICAL PARTS LIST

PART NUMBER	DESCRIPTION
SPANNER	
FH0106	'C' SPANNER
THREADED SLEEVES	
FH1005	SLEEVE, THR M50x1.5, 43 ID x 75long
FH1006	SLEEVE, THR M50x1.5, 42.2 ID x 75long
FH1009	SLEEVE, THR M50x1.5, 41 ID x 75long
FH1010	SLEEVE, THR M50x1.5, 45 ID x 75long
FH1014	SLEEVE, THR M50x2, 45 ID x 90long
FH1015	SLEEVE, THR M55x2, 48 ID x 120long
FH1020	SLEEVE, THR M55x2, 50 ID x 120long
FH1025	SLEEVE, THR M57x2, 2" ID x 120long
FH1026	STRUT TUBE, THR M57x2, 47 ID x 365long I M51x1.5 INT THR
FH1030	SLEEVE, THR M60x2, 54 ID x 120long
FH1031	SLEEVE, THR M60x2, 52 ID x 120long
FH1035	SLEEVE, THR M60x2, 55 ID x 120long
FH1036	SLEEVE, THR M60x2 OD x 135long I M51x1.5 INT THR
FH1037	SLEEVE, THR M57x2 OD x 170long I M48x1.5 INT THR
FH1038	SLEEVE, THR M60x2 OD x 180long I M51x1.5 INT THR
LOWER SPRING SEATS	
FH2005	LOWER SEAT, M50x1.5 ID THR, SUIT 53 ID SPRING
FH2010	LOWER SEAT, M50x1.5 ID THR, SUIT 57 ID SPRING
FH2011	LOWER SEAT, M50x2 ID THR, SUIT 60 ID SPRING
FH2012	LOWER SEAT, M50x1.5 ID THR, SUIT 63 ID SPRING
FH2015	LOWER SEAT, M55x2 ID THR, SUIT 60 ID SPRING
FH2020	LOWER SEAT, M55x2 ID THR, SUIT 63 ID SPRING
FH2021	LOWER SEAT, M55x2 ID THR, SUIT 65 ID SPRING
FH2025	LOWER SEAT, M57x2 ID THR, SUIT 63 ID SPRING
FH2026	LOWER SEAT, M57x2 ID THR, SUIT 65 ID SPRING
FH2030	LOWER SEAT, M60x2 ID THR, SUIT 63 ID SPRING
FH2031	LOWER SEAT, M60x2 ID THR, SUIT 65 ID SPRING
LOCK RINGS	
FH3005	LOCK RING, M50x1.5 ID THR
FH3011	LOCK RING, M50x2.0 ID THR
FH3015	LOCK RING, M55x2.0 ID THR
FH3025	LOCK RING, M57x2.0 ID THR
FH3030	LOCK RING, M60x2.0 ID THR
UPPER SPRING SEATS	
FH4005	UPPER SEAT, SUIT 57 ID SPRING
FH4010	UPPER SEAT, SUIT 60 ID SPRING
FH4013	RAISED UPPER SEAT, SUIT 60 ID SPRING
FH4015	UPPER SEAT, SUIT 63 ID SPRING
FH4020	UPPER SEAT, SUIT 65 ID SPRING
FH4023	RAISED UPPER SEAT, SUIT 63 ID SPRING
SPRING SEPARATORS	
FH5005	SEPARATOR, SUIT 57 ID SPRING
FH5010	SEPARATOR, SUIT 60 ID SPRING
FH5015	SEPARATOR, SUIT 63 ID SPRING
FH5020	SEPARATOR, SUIT 65 ID SPRING
WELD ON THREAD STRUT TOPS	
FH8010	WELD THREAD TOP, 39.8 ID, M48x1.5 INT THR, 40long
FH8011	WELD THREAD TOP, 46.6 ID, M48x1.5 INT THR, 75long
FH8012	WELD THREAD TOP, 42 ID, M48x1.5 INT THR, 29long
FH8021	WELD THREAD TOP, 49.6 ID, M51x1.5 INT THR, 75long
FH8022	WELD THREAD TOP, 54 ID, M51x1.5 INT THR, 44long
KONI GLAND / LOCK NUT	
7325-01-0031	KONI GLAND / LOCK NUT, THR 48x1.5
7325-01-0071	KONI GLAND / LOCK NUT, THR 51x1.5



COIL OVER INFORMATION

Topperformance Products has a long history with providing suspension components to the automotive market in Australia.

The coil over adjustable ride height hardware products are designed and engineered by Topperformance Products to suit both the KONI shock absorber range, and a wide range of other suspension brands. The range of hardware is intended for motorsport use, especially with the KONI 8611 double adjustable sport inserts, and is not recommended to be used for normal road use.

This catalogue provides information on a wide range of parts including: coil over sleeves, adjustable lower spring seats, lock rings, upper spring seats, and spring separators. The listing details the sleeve internal diameter (I.D.), the spring I.D., the sleeve length, and the part number of the component. There is also extra information regarding each component on the numerical parts list. Topperformance Products also stock a range of KONI gland or locking nuts, bump stops, and an adjusting 'C' spanner to complement the range of fitting hardware.

The sleeves listed are made from high quality materials and machined to a high degree of accuracy. They are electro-plated to resist corrosion. It is important to measure the outer diameter of the shock absorber or strut and select the sleeve which will fit over the shock absorber or strut. With a wide range of sleeves available for multiple shock absorber and McPherson strut sizes, there is an option for almost all applications.

Spring seats, lock rings, and separators are machined from toughened aluminium before being anodised. They are designed to suit the King and Eibach spring dimensions, of various internal diameters.

The sleeve I.D. is the major factor in spring seat selection. There are spring seats available for all sleeves with at least two spring I.D. options for each sleeve I.D.

All upper spring seats come with a standard 10mm size hole for the shock absorber shaft. This hole can be drilled larger to suit larger shaft sizes if required. The inner diameter of the upper spring seat is designed to fit the KONI cellasto progressive bump rubber. Other bump rubbers may also be utilised.

When fitting the sleeve to the body of mono-tube gas hydraulic shock absorbers the sleeve must not be welded. FH1020 is designed to suit the 50mm outer diameter of mono-tube gas hydraulic shock absorbers and is specially machined to fit onto a circlip.

When fitting the sleeve to the body of twin-tube and McPherson struts the sleeve must be welded to the tube.

When selecting and fitting hardware to the shock absorber or strut, it is vital that the spring choice, fitment of sleeve, and position of seat is such that coil bind at full bump will be impossible.

The KONI Sport and Racing high performance range of shock absorbers, including the 8611 series double adjustable inserts are the perfect combination when setting up a coil over suspension package.

The KONI range of progressive cellasto bump stops provide a comfortable aftermarket bump stop replacement for most shock absorbers and struts.

The 8611 Series KONI double adjustable insert is the perfect addition to a coil over strut conversion.

- Externally double adjustable in bump and rebound damping, giving fine and precise tuning
- Range of lengths from 500mm to 610mm open lengths, 290mm to 390mm body lengths
- To suit strut inside diameters of 44mm and larger
- Made from highest quality materials
- Superb ride quality and big handling improvements
- Ideal for motor sport or track day driver



SPRINGS AND ACCESSORIES



Eibach & King Race Springs

Topperformance products stock a range of different length's, inner diameters and spring rates



Eibach & King Tender Springs

Keep your Springs trapped with Eibach or King Tender Springs



Bump Stops



Topperformance Products also have a range of KONI Racing shock absorbers to suit your motorsport application.

Over 55 years of experience in Formula 1 has rightly given KONI Racing shock absorbers a reputation for high performance.

KONI shock absorbers are produced from the finest materials, machined to the narrowest tolerances, following strict, high quality control standards in every production step, to ensure every single damper delivers optimum performance.

KONI racing shock absorbers provide you with better drive feel, more stability, a wide range of bump and rebound adjustment options, and excellent reliability and repeatability.



Topperformance
Products Australian Distributor of KONI Shock Absorbers

14-16 Edison Road, Dandenong Sth VIC 3175

Phone: 03 9873 1722

Email: topeper@topperformance.com.au

www.topperformance.com.au



Topperformance Products is the sole Australian distributor of the world renowned KONI shock absorbers. Contact us today to upgrade your vehicle suspension!